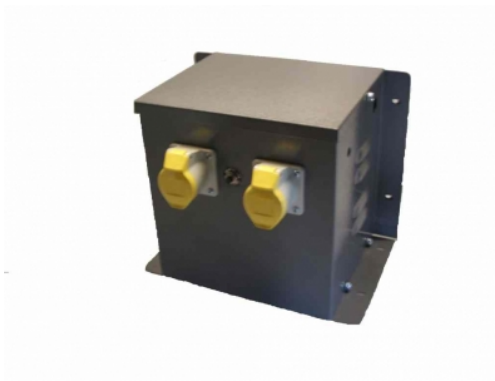


## Datasheet for: WM1500

### Product Type: Enclosed isolating transformers

1500VA 230v to 2x110v CTE 16amp sockets

VA	1500
Input Voltage	230
Input Termination	Screw terminals
Input Current	7
amps	13.63
Output Voltage	110v CTE
Output Termination	2 x 110v 16amp yellow sockets
Product Case	P3 Industrial floor/wall mounting case IP23
Dimension	Ht:244 W:180 L:270
Weight	13kg
Primary Protection	Push to reset circuit breaker SP10
Surge Protection	SL32 Surge Limitor
Product Type	Safety Isolating transformer Conforms to EN61558-2-23 CE & RoHS
Regulation	0.04



**Commodity code:** 851539130

**RoHS Certificate:** Airlink Transformers certifies and testifies that all the products and goods delivered and invoiced, do not contain any of the hazardous substances as mentioned in the 2011/65/EU European directives (RoHS). Particularly these products do not contain: Heavy metals such as Pb, Cd, Cr6+ Bifenil Polybromurate (PBB) Ether Difenil Polybromurate (PEDE)



**Declaration of Conformity:** Airlink Transformers declare that the product WM1500 conforms to current European safety and EMC regulation EN61558-2-6 (Safety Isolating transformer) CE & RoHS compliant. Manufactured to Class A 105degC.

**Declaration by the Exporter:** The exporter of the product covered by this document declares that these products are of EU preferential origin.  
15/04/2026