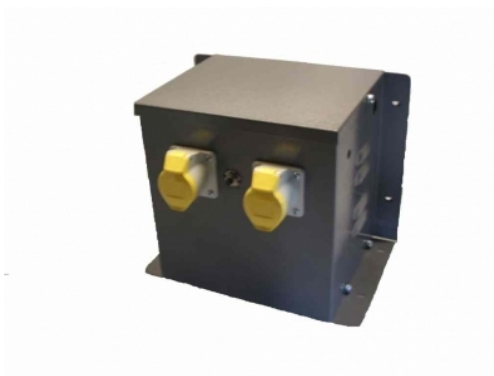


## Datasheet for: WM3400

### Product Type: Enclosed isolating transformers

3500VA 230v to 2x110v CTE 16amp sockets

VA	3500
Input Voltage	230
Input Termination	PA220 3way Screw terminals
Input Current	15
amps	16
Output Voltage	110v CTE
Output Termination	2 x 110v 16amp yellow sockets
Product Case	P4 Industrial floor/wall mounting case IP23
Dimension	Ht:270 L: 338 W:215 (mm)
Weight	20kg
Primary Protection	Push to reset circuit breaker SP10
Surge Protection	SL35 30A Surge limiter
Product Type	Safety Isolating transformer Conforms to EN61558-2-23 CE & RoHS
Regulation	0.03



**Commodity code:** 851539130

**RoHS Certificate:** Airlink Transformers certifies and testifies that all the products and goods delivered and invoiced, do not contain any of the hazardous substances as mentioned in the 2011/65/EU European directives (RoHS). Particularly these products do not contain: Heavy metals such as Pb, Cd, Cr6+ Bifenil Polybromurate (PBB) Ether Difenil Polybromurate (PEDE)



**Declaration of Conformity:** Airlink Transformers declare that the product WM3400 conforms to current European safety and EMC regulation EN61558-2-6 (Safety Isolating transformer) CE & RoHS compliant. Manufactured to Class A 105degC.

**Declaration by the Exporter:** The exporter of the product covered by this document declares that these products are of EU preferential origin.  
21/06/2025



[www.airlinktransformers.com](http://www.airlinktransformers.com) - VAT No. 573 1888 10

Airlink Transformers is a trading name of Albury Services Ltd company reg No 2666478  
14 Capital Place, Lovet Road, The Pinnacles, Harlow, Essex, UK, CM19 5AS  
01279 431865 | [sales@airlinktransformers.com](mailto:sales@airlinktransformers.com)