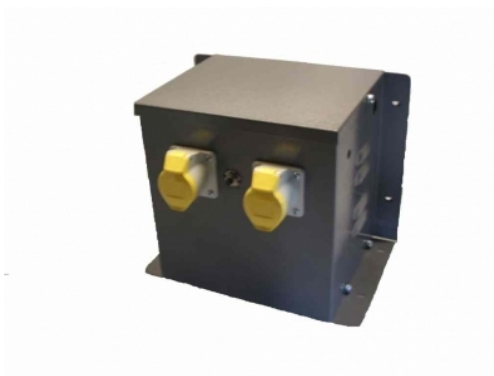


## Datasheet for: WM3403

### Product Type: Enclosed isolating transformers

3500VA 415v to 2x110v CTE 16amp sockets

VA	3500
Input Voltage	415
Input Termination	PA220 3way Screw terminals
Input Current	8
amps	16
Output Voltage	110v CTE
Output Termination	2 x 110v 16amp yellow sockets
Product Case	P4 Industrial floor/wall mounting case IP23
Dimension	Ht:270 L: 338 W:215 (mm)
Weight	20kg
Primary Protection	Push to reset circuit breaker SP10
Surge Protection	SL35 30A Surge limiter
Product Type	Safety Isolating transformer Conforms to EN61558-2-23 CE & RoHS
Regulation	0.03



**Commodity code:** 851539130

**RoHS Certificate:** Airlink Transformers certifies and testifies that all the products and goods delivered and invoiced, do not contain any of the hazardous substances as mentioned in the 2011/65/EU European directives (RoHS). Particularly these products do not contain: Heavy metals such as Pb, Cd, Cr6+ Bifenil Polybromurate (PBB) Ether Difenil Polybromurate (PEDE)



**Declaration of Conformity:** Airlink Transformers declare that the product WM3403 conforms to current European safety and EMC regulation EN61558-2-6 (Safety Isolating transformer) CE & RoHS compliant. Manufactured to Class A 105degC.

**Declaration by the Exporter:** The exporter of the product covered by this document declares that these products are of EU preferential origin.  
21/06/2025

